

SAP EWM 2021 Roadmap

Releases and enhancements for SAP
EWM available in Q4 2021



Ability to block bulk bins from putaway

- Enable blocking of the putting away of goods to storage bins in the bulk storage area.
- Functionality that can be used to block the bins immediately or be scheduled to run on a recurring basis.
- Monitoring of the bin blocking jobs.



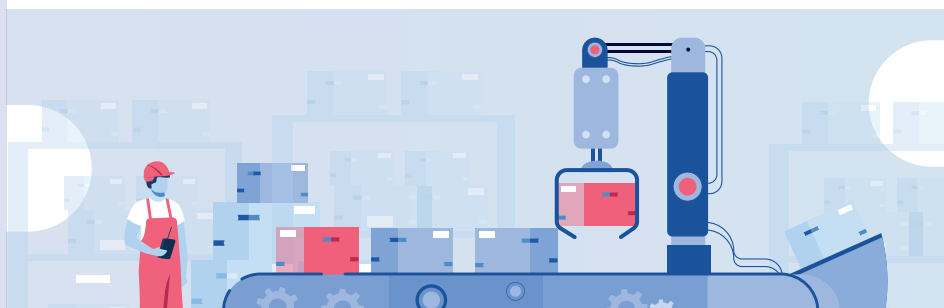
Additional features for just-in-time stock transfer

- Support for supply-to-production processes between storage locations, supported using enterprise warehouse management functionality, and production supply areas managed using inventory management functionality.
- 'Cancel picking' feature.
- Enablement of pick denial and bin denial processing.
- New automated follow-up action in picking preparation and picking execution, enabling the removal of items from a wave.
- Enhancements in the warehouse management monitor.



Extended functionality in the SAP EWM warehouse monitor

- New columns 'State Changed By' and 'Change Date/Time for Exception History' in the warehouse monitor (Node Alert > Exceptions) to track state changes.
- New methods for the warehouse monitor node serial number to invoke posting changes for selected serial numbers.
- New monitor method for the product monitor node to display change documents in the sub-node warehouse attribute and in the sub-node storage type.
- Addition of 'Staging Request' into the search criteria for MES-driven staging warehouse requests.
- Addition of 'Staging Request Item', 'Reservation', 'Reservation Item', and 'Staging Method' into search criteria for MES-driven staging warehouse requests'
- Addition of a production material request (PMR) as a document reference to a stock transfer item for MES-driven staging.
- Addition of a staging quantity to a stock transfer item for MES-driven staging.
- Addition of an 'Adjust Quantity' function to massively close warehouse request items for MES-driven staging.
- Addition of a SOAP message as a new monitor node to display all inbound or outbound SOAP messages.
- Support for count references in the monitor node 'Physical Inventory Documents'.
- Attachments to HUs in nodes
 - Stock and bin > handling unit
 - Documents > handling unit
- Enhancements to stock transfer functionality for JIT calls (node 'Outbound > Documents > Stock Transfer for JIT Call')
 - Addition of new methods
 - New sub-nodes for 'Warehouse Order' and 'Handling Unit'





Adjustments to SAP Fiori apps for delivery processing

- New features in the SAP Fiori apps 'Run Outbound Process – Deliveries' and 'Run Outbound Process – Production' to enable changes to gross weight and volume of delivery items.
- Enablement of navigation from the SAP Fiori apps 'Run Outbound Process – Deliveries', 'Run Outbound Process – Production', 'Change Inbound Deliveries – Deliveries', and 'Change Inbound Deliveries – Production' to the packing screen, which allows better managing of handling units (HUs), including nested HUs.



Advanced shipping and receiving – UI enhancement

- Support for the container unit layer in the advanced shipping and receiving user interface.
- Display of the error message for goods movement in the delivery document and on the product layer.



Analytical CDS views for storage space

- Query the storage situation with the help of analytical CDS views.
- Analyse utilisation of storage space.
- Gain a capacity overview for several dimensions (warehouse number, storage type, storage section, aisles, and storage bins).



Attachment services for handling units

- Availability of attachment services for handling units.
- Attachments in the warehouse management monitor (Handling Unit node).
- Attachments in an app for processing inbound deliveries.



Automatic setting of shipping readiness status in advanced shipping and receiving functionality

- Option to set the shipping readiness status of a delivery to 'ready' automatically in advanced shipping and receiving.
- Introduction of customising settings to define the point at which an outbound delivery order can be set to 'ready for shipping'.
- Provision of a report that analyses customisation settings, finds matching outbound delivery orders, and sets their shipping readiness status to 'ready'.



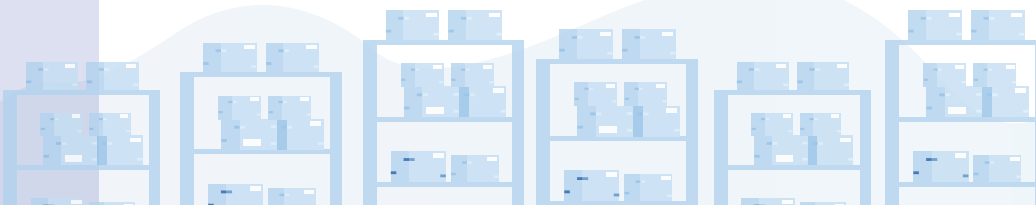
Business partner: adoption of multiple and time-dependent addresses in the order-to-cash scenario

- Handling of multiple and time-dependent addresses, which supports the representation of a legal entity within the customer data of a BP.
- Certain address usage types on the BP level enabling the assigned customer master to use multiple addresses; enhancement of the customer data to manage address-dependent attributes.
- Enabling the consumption of multiple and time-dependent addresses that are provided by BP master data in; sales documents, outbound deliveries and billing documents.
- Settlement management and global trade management reuse of the given logic for sales document processing.
- Operational procurement support for the integration of multiple addresses in the third-party process; purchase requisition and purchase order retrieval of delivery address information from the sales order.
- Continued EWM use of BP standard addresses from the very beginning as the ship-to addresses in outbound delivery; consideration of multiple and time-dependent addresses of the BP in order-related outbound delivery processes in which the specific address to be used is already determined in the order.
- Adaptation of multiple addresses into the interface to SAP Global Trade Services (SAP GTS).
- Consideration of multiple and time-dependent addresses of BPs in:
 - Vehicle management (customer ordering and delivery process)
 - Just-in-time processing (supply to customer)



Display of product change documents in the warehouse monitor

- Display of change documents for warehouse attributes and storage type attributes of the product master data in extended warehouse management (EWM) functionality under:
 - Product Master Data > Warehouse Attribute
 - Product Master Data > Warehouse Attribute > Storage Type Attribute





Enhancements to apps 'Pack Outbound Deliveries' and 'Pack Warehouse Stock' – support daily packing activities (OP)

- Support customer stock during packing.
- Provide information about the sales order and project and about the sales order item through the SAP Fiori apps 'Pack Outbound Deliveries' and 'Pack Warehouse Stock'.



Integration of dangerous goods functionality with decentralised systems

- Drawing of dangerous goods master data from the dangerous goods management capability of SAP S/4HANA for product compliance.
- Distribution of dangerous goods master data to decentralised warehouse management systems such as SAP EWM.



JIT/JIS supply to production with an external source

- Enable just-in-time and just-in-sequence (JIT/JIS) supply to production products for picking in the warehouse or supplied by a vendor.
- Enable warehouse clerks to post the goods receipt directly to the production supply area (PSA) in case the physical movement does not need system support.



Manufacturing execution and digital manufacturing cloud: staging

- Trigger staging from SAP Manufacturing Execution and SAP Digital Manufacturing Cloud based on manufacturing operations.
- Stage the components required at the right moment and right production supply area, independent of the staging method (single-order staging or cross-order staging).
- Create staging tasks automatically as soon as there is free capacity in the production supply area.
- Send a notification to SAP Manufacturing Execution and SAP Digital Manufacturing Cloud of stock changes in the production supply area.
- Provide more transparency on the staging process and production supply area stock of the requested components.



Mobile warehousing through the radio frequency framework

- Display screens, messages, and dialogs from the RF UI environment in the browser of a mobile handheld device:
 - With an SAP Fiori-like design.
 - Without the need to use ITS mobile.



Plant maintenance integration with SAP EWM

- Creation of outbound deliveries based on plant maintenance (PM) orders:
 - Creation of outbound deliveries in SAP S/4HANA.
 - Capture of PM data in outbound deliveries for use in the later stages of the process.
- EWM delivery creation:
 - Creation of deliveries in EWM using PM order data from outbound deliveries.
 - Addition of PM order number, reservation number, and reservation item number to the EWM outbound delivery order reference data.
- Use of PM order data in EWM:
 - Enhancements to the EWM outbound delivery user interfaces to provide display and search capabilities for PM orders and reservations.



SAP Fiori app to select and display warehouse documents

- New SAP Fiori app 'Display Warehouse Documents'* that selects and displays warehouse documents.

*SAP Fiori app names may be subject to change.





Stock consolidation – flexible date interval for batch consolidation

- Enable input for a tolerance interval on date fields from a standard batch master.
- Allow consolidation of different batches with dates in an interval range.
- Enable the following fields:
 - Expiration Date
 - Date of Manufacture
 - Next Inspection Date



Stock correction for the production supply area

- Provide more reliable results in determining stock figures when using stock at the production supply area (PSA) in the warehouse for production supply strategies, including:
 - Pending goods issue
 - Pending putaway in replenishment if done by RF



Support for cross-delivery handling units for TU-based integration between SAP TM and EWM

- Cross-delivery packing into one handling unit enabled by SAP EWM.
- Receipt of cross-delivery packing information through LDAP notifications by SAP Transportation Management (SAP TM).
- Ability to include several freight units of different deliveries onto the same package item.



Support navigation from smart business drill downs in the Warehouse KPIs for Operations app to the outbound delivery app

- Directly navigate from the Warehouse KPIs for Operations app to an SAP Fiori app for processing outbound deliveries, by clicking the outbound delivery order on the drill-down page.



Updates in RF-framework in extended warehouse management

- Provide business add-ins (BAI) to enhance the overwrite RF framework customising for logical transactions, such as step flow or function code profiles.

- Support longer barcodes and barcodes with concatenated values that use different ways to identify them:
 - Enable RF screens to receive barcodes with more than 50 characters.
 - Identify different barcode types and their logic to determine content.
 - Use BAdI to support data identifier logic.



Usage of packing instruction and package builder capabilities in EWM functionality

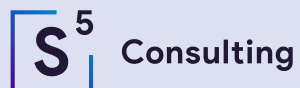
- Usage of the packing instruction (PI) or package builder (PB) capability as an alternative to the packing specification (PS) in the following three process steps:
 - Inbound packing or deconsolidation
 - Outbound packing
 - Receipt from production



Use calculated sample size in quality management for moving a sample to quality inspection

- Use calculated sample sizes in quality management, to create a warehouse task in inbound processing, to move the sample to the quality inspection work center, while the remaining quantity of the inspection lot is put away.
- In the case the goods are packed, round up the sample size to be moved to the quality inspection center so that a full handling unit is moved to the quality inspection center.

The article provided through
the courtesy of The Config Team



www.s5consulting.no
post@s5con.no