



The Config Team™
SAP Supply Chain Specialists

PreBilt™

SAP Supply Chain Mobility

PreBilt for the SAP Supply Chain

PreBilt allows any supply chain process to be executed through a mobile device and integrated directly with SAP in real-time. Implementing mobile solutions, to perform SAP-driven transactions, allows the digitalisation of end-to-end supply chain processes to streamline operations.

By replacing outdated technology or manual and paper-based processes, mobile solutions can increase user engagement and productivity, enhance operational efficiencies, improve customer experience and significantly reduce operational costs.



Moving to Mobile

Moving to mobile technology can bring both operational and business benefits. Many warehouses, manufacturing plants and distribution centres are still operating manual processes, paper-based systems and outdated technology, which do not allow for real-time visibility of supply chain processes.

Whether it is PO approval, goods receipt, production, picking or proof of delivery, manual or paper-based processes are subject to inevitable human error that can lead to inaccurate data, process delays and customer order errors.

The ability to view all supply chain processes in real-time across multiple business functions, ensures activity can be monitored, with up to date reports and analytics generated to allow informed business decisions and proactive actions to be taken.

Operational Benefits



Stock Accuracy

The ability to view accurate stock inventories, in real-time, is crucial to not only operating an efficient business but providing a positive customer experience.



Staff Onboarding

With intuitive, simple to use mobile applications, staff training time is minimised, while reducing the reliance on experienced staff members to train new employees.



Real-time Data

Accurate business information is immediately available to everyone that needs it, allowing informed decisions to be made and proactive action to be taken.



Eliminate Paperwork

Eliminating paperwork from any process reduces data inputting time, eradicates the risk of losing documentation and ensures complete traceability.



Integration

By integrating end-to-end supply chain processes, it ensures separate supply chain activities are not recorded and stored in isolation.



Digital Data

Maintaining all data digitally ensures that information can always be accessed when needed and reduces reliance on knowledge stored within paperwork or with individual employees.

Business Benefits

Increased Productivity

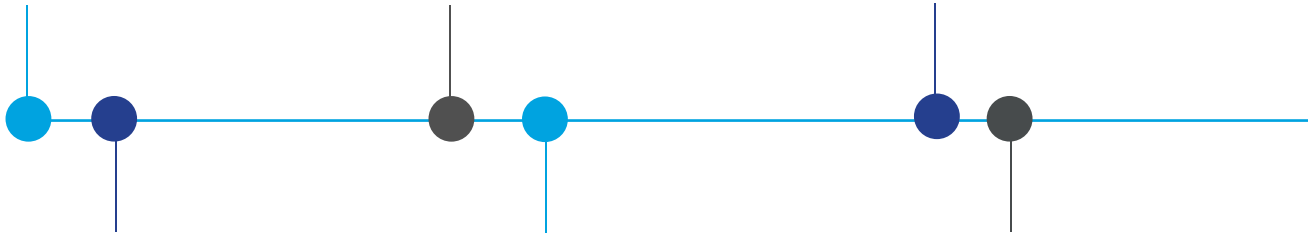
Utilising mobile devices can drive productivity gains by reducing the time taken to manually complete tasks, improving data accuracy and offering real-time business insights to allow quick reactions and informed decisions to be made.

Positive Customer Experience

Real-time insights ensure accurate stock levels and order status information can be provided to customers, while queries can be dealt with quickly and efficiently to ensure a positive customer experience is maintained across all touch points of the supply chain process.

Enhanced Employee Engagement

Simplifying process tasks for users, offering a user interface that is intuitive and easy to navigate while reducing operational errors and customer complaints, all contribute to improved employee engagement.



Improved Profitability

With tangible cost savings possible through reduced manual and paper-based processes, along with the significant labour time savings, workforces can work faster and smarter ensuring operations are more productive to drive an increase in profitability.

Reduces Carbon Footprint

Eliminating paper from supply chain processes not only reduces costs and improves efficiency but also helps companies to achieve their environmental and waste targets.

Improved Order Fulfilment

With increased inventory accuracy, pick locations instantly visible and delivery details available at the touch of a button, orders can be picked, packed and shipped faster to ensure more orders are fulfilled on time in full.

End-to-End Supply Chain Processes

PreBilt is a comprehensive suite of mobile applications, which have been designed to digitise any supply chain process within warehousing, manufacturing and distribution centres, from Goods In through to production, storage, picking and packing and finally Goods Out.

However, we understand that each business and supply chain process is different, which is why we have a dedicated team of developers that can create innovative, bespoke mobile application solutions to meet any individual challenge.



PreBilt: Functionality

PreBilt can facilitate a wide range of processes within every SAP supply chain module

Deeply Engineered for SAP Modules:		Any Combination of:	
Inventory Management (IM)	Quality Management (QM)	Handling Unit Management	
Warehouse Management (WM)	Material Management (MM)	Storage Unit Management	
Extended Warehouse Management (EWM)	Plant Maintenance (PM)	Serial Number Management	
Production Planning (PP)	Sales & Distribution (SD)	Batch Management	

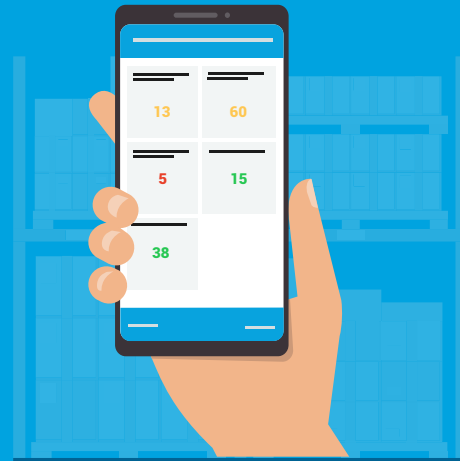
Functionality by Module:			
IM	WM	EWM	
Goods Receipt	Goods Receipt	Unloading	Pick Point
Putaway	Putaway	Deconsolidation	Internal Movement
Stock Management	Stock Management	Goods Receipt	Warehouse Inquiry
Physical Inventory	Physical Inventory	Putaway	Labour Management
Picking and Packing	Picking	Physical Inventory	Consumption
Goods Issue	Packing	Resource Management	Yard Movement
Staging to Production	Loading	Picking	
	Goods Issue	Packing	
	Staging to Production	Loading	

QM	PP	MM	POD	PM
Result Recording	Materials Reservations	Purchase Order Approval	Vehicle Checks	Plant Maintenance
Notifications	Goods Issue	Purchase Requisition Approval	Loading	
Inspection Lot	Kanban		Discrepancy Handling & Evidence	
	Time Ticket		Customer Returns	
	Production Packing		Satellite Navigation	
	Goods Receipt		Proof of Delivery	
			Promotional Items	
			Create & Confirm Order	
			Create Notification	
			Order Enquiry	
Analytics Mobile Processes				
Exception Management	Workforce Activity	Workload Management	Supply Chain Performance Metrics	

PreBilt for Analytics

PreBilt for Analytics is included as standard with any combination of our SAP WM and EWM mobile apps. A completely integrated solution, the app enables a live data feed direct from SAP to any mobile device or desktop. Key metrics are provided in real-time to ensure warehouse and production managers have visibility of the insights needed to enable informed business decisions to be made.

Featuring a red, amber and green status update to highlight where current operational issues are, the app eliminates the need for manual data analysis; source information is taken directly from SAP and displayed on mobile devices using a simple and intuitive user interface.



Analytics Metrics

The following typical metrics are just some that can be provided in the Analytics App, with the specific KPIs generated tailored to meet the needs of each individual customer.

WM Examples

- Open Transfer Orders
- Open Transfer Requirements
- Critical Deliveries
- Negative Stocks
- Open Posting Change Notices
- Critical Stocks for Production Supply

EWM Examples

- Physical Inventory: Counted bins, products, inventory documents
- Storage Bins: Weights, capacities, warehouse capacity
- Warehouse Orders: Open orders, activity areas, required time deviation
- Deliveries: Outstanding deliveries, total HUs, lead times
- Warehouse Tasks: Outstanding tasks, tasks per user, average duration
- Transportation Units: Loading duration, total TUs, waiting periods



Application Features

PreBilt offers enhanced features, compared with the standard SAP mobile solution.

Device Agnostic

Applications work on most mobile devices including smartphones, barcode data capture terminals, tablet and ruggedised mobile devices .

Barcode Scanning

1D – GS1, SSCC
2D – Datamatrix

Media Support

The software enables users to play and save supporting documents such as PDFs, product images and training videos.

GPS

Device integration with Google Maps allows stock to be tracked from dispatch through to delivery.

Image Capture

Functionality to capture photographic evidence to record discrepancies, damaged goods and comments.

Multi-language

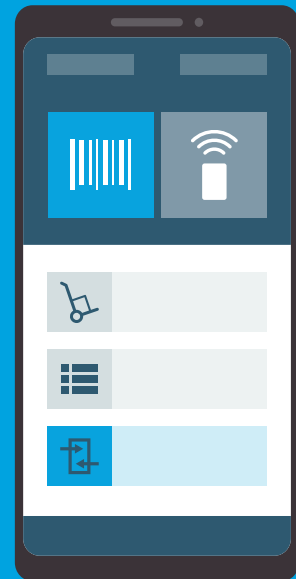
The applications can be translated into any language to enable them to be deployed globally across various users.

Sign-on Glass

Offer document authorisation and electronic proof of delivery through the mobile application.

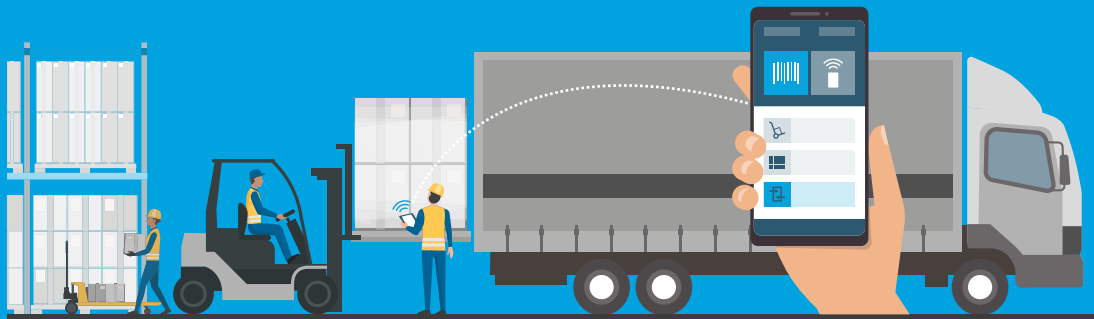
Warehouse Blackspot Support

The applications can be used when there is temporary loss of connection to ensure data can still be collected or inputted in warehouse blackspots or areas with intermittent network access.



Mobility Platform

Intuitive and easy to navigate user interface	✓
Fully responsive user interface with dynamic screen sizing	✓
No additional network infrastructure needed, works with mobile data or Wi-Fi	✓
Fully integrates into SAP's supply chain modules	✓
Offers real-time mobility, without the need for middleware	✓
Offers an SAP certified alternative to ITS mobile	✓

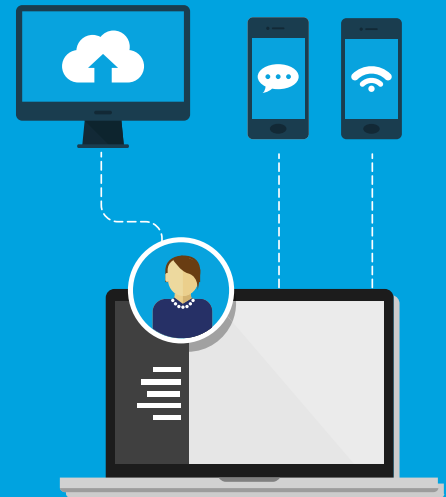


Mobile Upgrade

Some companies are already experiencing limited benefits of mobility within the supply chain through SAP's standard mobile solution, typically ITS Mobile. While ITS offers basic capabilities, its user interface is difficult to navigate and has functional limitations within supply chain environments.

By comparison, PreBilt offers easy-to-use applications that integrate seamlessly with SAP, can be used on or offline and offer a whole host of value added features, all designed with the end user in mind.

If companies are already operating ITS Mobile, we can simply convert the existing ITS applications to the equivalent mobile solutions from The Config Team, allowing increased functionality and improved user experience, without wasting the investment that has already been made.



Don't take our word for it....

This is what our customers say about our mobile applications:

"Since implementing mobile applications from The Config Team, our new staff training time has gone from four days to two hours."

Automotive User

"We have removed somewhere near to 2.5 million pieces of paper through implementing the SAP Proof of Delivery App from The Config Team. Eliminating such a volume of paperwork has revolutionised that side of our supply chain."

Food Production User



